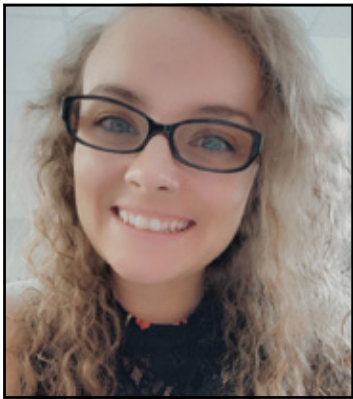


**TODAY'S VERSE**

1 Peter 5:6 *Humble yourselves therefore under the mighty hand of God, that he may exalt you in due time.*

**FACES OF MONTGOMERY**

People who call our community their own.



Meet the staff! Kelsey Curran is the paginator for the Paper of Montgomery County. She edits and helps complete the daily news as well as the Montgomery Memories and Sports Report every month for viewers to enjoy. You can reach her by email at news@thepaper24-7.com

**THREE THINGS You Should Know:**

**1** Thirteen lawmakers in the New Hampshire House of Representatives recently proposed that the state "peaceably" declare "independence" and become "a sovereign nation," reports the Association of Mature American Citizens [AMAC]. If it sounds like a joke, says AMAC, it's not the first time that elected officials in a state have sought to secede from the Union. Other states in the recent past have sought secession and, according to the legal website, FindLaw, there is a procedure that might allow secession, pointing out that in 1868 the U.S. Supreme Court ruled that a state can secede. All a state has to do is get an okay from both houses of Congress and get their petition ratified by 75% of the nation's legislatures. Lots of luck. As the late Supreme Court Justice Antonin Scalia aptly put it, "If there was any constitutional issue resolved by the Civil War, it is that there is no right to secede."

**2** The Indiana Department of Transportation announces the U.S. 52/Teal Road project is scheduled to begin on or after Monday, April 4. The contractor will be restricting traffic to one 10' lane in each direction. The western end of the project will start just west of Old Romney Road on State Road 25 (locally known as West Teal), going east to Old U.S. 231, proceeding north on Old U.S. 231 to the 4th Street/Poland Hill Road intersection, and continuing east on U.S. 52/Teal Road terminating between Brothers Drive and South 30th Street.

**3** Students from an University of Indianapolis Applied Event Management course, in collaboration with Special Olympics Indiana, will host the tenth annual Special Olympics Youth Basketball Tournament on Saturday, March 26, at the University of Indianapolis. This event is free and open to the public.

# The Paper

## OF MONTGOMERY COUNTY

Montgomery County's oldest locally owned independent newspaper

50¢

CRAWFORDSVILLE, INDIANA

WWW.THEPAPER24-7.COM

## Cutting Taxes For All Hoosiers

Thanks to many years of fiscally conservative leadership, Indiana is in an extremely fortunate economic position. With state revenues continuing to outpace expectations, the General Assembly recently passed tax cuts for Hoosiers.

House Enrolled Act 1002 phases down Indiana's income-tax rate to 2.9%, tied for the lowest rate in the nation, and could save Hoosier taxpayers up to \$1 billion once fully implemented. This phased-in tax reduction is contingent on state revenue continuing to grow, ensuring we are still practicing the fiscal responsibility that got us here. Hoosiers will also benefit



Sen. Phil Boots

from HEA 1002 repealing Indiana's utility receipt tax, which will help combat rising utility costs. HEA 1002 requires utility companies to reduce their rates and pass the savings from this tax cut on to

their customers.

Lastly, this legislation pays down pension debt in order to keep our promises to retired Hoosier teachers.

These tax cuts come on top of the automatic taxpayer refund that was triggered at the end of fiscal year 2021, meaning not only will Hoosiers have taxes reduced going forward, but they will also receive a tax credit of about \$125 after filing this year.

I take great pride in the fact that Indiana can simultaneously return money to taxpayers, cut taxes and pay down debt, and I will continue to advocate for fiscally responsible policies.

## Science Fairs, School Buses, Brains And The Future

Who says a science fair project can't change the world? When middle-schooler Holly Thorpe tested carbon dioxide fumes in Miami-Dade school buses, she found the rates were ten times higher than the EPA recommends, far higher than OSHA allows for work sites. Air pollution reduces test scores, slows cognition, creates nausea and headaches, as well as increases cancer and asthma. The evidence makes it hard for school districts to look away. In February 2021, the Miami-Dade school district became one of many around the nation committing to zero-emissions bus fleets.

School districts in New York, Georgia, Maryland, and Indiana

are replacing diesel school buses



The League of Women Voters, open to men as well as women, is a nonpartisan, multi-issue political organization that encourages informed and active participation in government. For information about the Montgomery County LWW, visit: www.lwvmtcoin.org or message to LWW, PO Box 101, Crawfordsville, Indiana 47933.

with electric ones. Even with cleaner-burning fuel technology, electric buses are the only zero-emission option. Everyone's health improves when communities reduce pollution, but adults often accept certain risks that we don't

make for our children. For small school districts like Crawfordsville, North Montgomery, and Southmont, those tradeoffs begin with the words "fiscal responsibility."

Transitioning to a new technology includes set-up costs that loom large, which is why John Smilie and Helen Hudson, members of the League of Women Voters, joined with Dr. Rex Ryker and Betsy Hamm of Crawfordsville Community Schools (CCSC) and a sales representative to explore options. The goal is to join a growing number of Hoosier school districts including Bartholomew

See LWW Page A6

## Timmons Is Back And Wandering Around

Notes scribbled on the back of an EKG printout . . .

\*\*\*

**TO PARAPHRASE** the late Jerry Garcia, what a long and strange trip it's been . . . although I'm relatively certain we're talking two very different kind of trips.

The short answer to the question so many of you have asked is that I am recovering nicely from the heart attack and ensuing quadruple bypass surgery. It sounds trite, but I really am getting a little better each day. Without going into the gory details, the (rather



TIM TIMMONS  
Two Cents

large) incision is healing and so are the smaller ones. My chest feels like it was cracked open like a lobster tail on a Friday night at Joe's Crab Shack. But that, too, is healing.

While I wouldn't wish this on my worst enemies, it has been an eye-opening experience for me. To say it's been life changing is an understatement. I have started losing weight again, thanks to an avoidance of sugars and salts. My sincere hope and goal is that I won't fall off that wagon like I did once before (if trainers Denise or Tonya see this, I will try harder this time – promise!).

At the risk of being repetitive, please bear with me while I once again say thank you. It has simply been overwhelming –

and more than a little humbling – as to how many of you have reached out, and continue to do so. I appreciate you reading the babblings of a newspaper vagabond more than I can possibly say.

\*\*\*

**AS YOU** probably guessed, the recovery comes with instructions not to drive. I didn't think much about that until I found myself being chauffeured everywhere we go. I got to figuring and I think this is the longest stretch of not driving for me since I started back in 1972. Funny how little things like that make a difference. It also made me think of parents and in-laws who lost their own abilities

See TIM Page A6

## The Daily Almanac



**Sunrise/Sunset**  
RISE: 7:46 a.m.  
SET: 8:06 p.m.



**High/Low Temperatures**  
High: 67 °F  
Low: 55 °F



**Wacky Holiday Today**

- Cuddly Kitten Day
- World Math Day



**What Happened On This Day**

- 1888 The Football League meets for the first time
- 1933 The Enabling Act of 1933 grants Adolf Hitler dictatorial powers in Germany



**Births On This Day**

- 1968 Damon Albarn English singer-songwriter, producer, actor
- 1749 Pierre-Simon Laplace French mathematician, astronomer

**Deaths On This Day**

- 2011 Elizabeth Taylor English/American actress
- 1931 Bhagat Singh Indian activist

**HONEST HOOSIER**

State final for Hoosier Hysteria in a couple of days. On one hand, I can't wait. On the other hand, it'll mean it's all over for another year.



**TODAY'S HEALTH TIP**

Eating whole grains instead of refined white starches results in less belly fat.

Today's health tip was brought to you by Dr. John Roberts. Be sure to catch his column each week in The Paper and online at www.thepaper24-7.com.



**OBITUARIES**

Ramona Lee (Perry) Stonebraker

The Paper appreciates all our customers. Today, we'd like to personally thank Molly Cline of Crawfordsville for subscribing!



8 51246 00100 5



**INSIDE TODAY'S EDITION**

- Wash 'N Go.....A2
- Tri-County Bank ..... A8
- Public Notices ..... A4
- Ben Hur ..... A8
- Obituaries.....A2
- Beltone.....A3

**THE MONTGOMERY MINUTE**

Want To Help?

The Montgomery County Youth Service Bureau is hosting a community blood drive on Thursday, March 24, 2022 at 1-6:45 p.m. Do you know someone with cancer, or is pregnant, or has sickle cell disease? Then you know someone who may need blood. Don't wait until an emergency happens to donate! There is NO substitute for the lifesaving gift of blood. It is precious, it is perishable, and the need for it never ends.

**TODAY'S QUOTE**

"I am enough of an artist to draw freely upon my imagination. Imagination is more important than knowledge. Knowledge is limited. Imagination encircles the world." Albert Einstein

**TODAY'S JOKE**

What's red and bad for your teeth?  
A brick.

**7 DAY FORECAST**

55/67 SHOWERS AND STORMS	41/49 CLOUDY, COOL, BREEZY	34/52 STRAY SHOWERS	34/45 CHILLY, BREEZY, SOMEWHAT POSSIBLE	28/48 BRIGHTER	32/52 PARTLY CLOUDY	31/60 BREEZY AND WARMER
WED	THU	FRI	SAT	SUN	MON	TUE



## OBITUARIES

### Ramona Lee (Perry) Stonebraker

March 3, 1931 - March 21, 2022

Ramona Lee (Perry) Stonebraker, of Kingman, passed away on March 21, 2022 at her home surrounded by her family.

She was born March 3, 1931, the youngest of 10 children, to William Percy & Minnie Pearl (Allen) Perry.

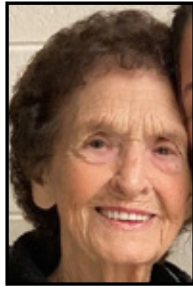
She graduated from Kingman High School and on July 9, 1951 she married William Earl Stonebraker, who preceded her in death in May 1985. She worked at R.R. Donnelley's as a book binder and retired after 25 years. She enjoyed playing bingo, shopping, and taking drives with her family and her little dog, Watson.

Survivors include her five children, Billy Stonebraker, Melody Rennick, Kandy (Bud) Peach, Cindy (Robert) Robinson and Holly (Brian) Peyton; a sister, Connie Warnick; eight granddaughters, Briley, Amber, Abby, Jennifer, Amanda, Amy, Erin and Kylie; five grandsons, Garrett, Brice, Jeremy, Ryan, and Adam; two great granddaughters; six great grandsons, and many nieces, nephews and cousins.

She is preceded in death by her parents; her husband, William Stonebraker; a son, Teddy Stonebraker; six brothers, Ted Perry, Gerald "Tob" Perry, Farrell Perry, Gene Perry, Leon Perry and Sonny Perry; two sisters, Geneva Beals and Maxine Wilson; daughter-in-law, Jody Stonebraker; and a grandson, Gregory Scott.

Cremation was chosen with a graveside service at 4 p.m. on Friday, April 1, 2022 at Coopers Chapel Cemetery, 1619 W Coopers Chapel Road, Veedersburg, IN. Sanders Funeral Care entrusted with care.

Share memories and condolences online at [www.sandersfuneralcare.com](http://www.sandersfuneralcare.com).



## Celebrate Spring And Help Save Lives By Giving Blood

It's officially spring! As the weather warms up and the latest COVID-19 surge continues to slow, many people are looking forward to meeting up with family and friends. At the start of this new season, the American Red Cross encourages the community to play an important role in helping save lives by making blood donation part of their spring plans.

The Red Cross is grateful to the hundreds of thousands of individuals who have rolled up a sleeve to give in early 2022. It's important to remember donated blood has a limited shelf life, so supplies must be constantly replenished. In the days and weeks ahead, it's critically important to maintain a readily available blood supply. Donors can make an appointment by downloading the Red Cross Blood Donor App, visiting [RedCrossBlood.org](http://RedCrossBlood.org) or calling 1-800-RED CROSS (1-800-733-2767).

While getting back into the stands to watch the home team play this spring, donors can join a team of their own - Team Red Cross! As a thank-you, all who come to give April 1-18 will receive an exclusive Red Cross T-shirt, while supplies last.

Health insights for donors

The Red Cross is testing blood, platelet and plasma donations for COVID-19 antibodies. The test may indicate if the donor's immune system has produced antibodies to this corona-



## American Red Cross

virus after vaccination or past exposure, regardless of whether they developed symptoms.

Plasma from routine blood, platelet and plasma donations that have high levels of COVID-19 antibodies may be used as convalescent plasma to meet potential future needs of COVID-19 patients with weakened immune systems.

The Red Cross is not testing donors to diagnose infection, referred to as a diagnostic test. To protect the health and safety of Red Cross staff and donors, it is important that individuals who have been asked to quarantine or believe they may be ill with COVID-19 postpone donation until they are symptom free for 10 days and feeling well and healthy.

At a time when health information has never been more important, the Red Cross is screening all blood, platelet and plasma donations from self-identified African American donors for the sickle cell trait. This additional screening will provide Black donors with an additional health insight and help the Red Cross identify compatible blood

types more quickly to help patients with sickle cell disease. Blood transfusion is an essential treatment for those with sickle cell disease, and blood donations from individuals of the same race, ethnicity and blood type have a unique ability to help patients fighting sickle cell disease.

Donors can expect to receive antibody testing results and sickle cell trait screening results, if applicable, within one to two weeks through the Red Cross Blood Donor App and the online donor portal at [RedCrossBlood.org](http://RedCrossBlood.org).

### Blood drive safety

Each Red Cross blood drive and donation center follows high standards of safety and infection control, and additional precautions - including face masks for donors and staff, regardless of vaccination status - have been implemented to help protect the health of all those in attendance. Donors are asked to schedule an appointment prior to arriving at the drive.

### Save time during donation

Donors can also save up to 15 minutes at the blood drive by completing a RapidPass®. With Rapid-

Pass®, donors complete the pre-donation reading and health history questionnaire online, on the day of donation, from a mobile device or computer. To complete a RapidPass®, follow the instructions at [RedCrossBlood.org/RapidPass](http://RedCrossBlood.org/RapidPass) or use the Red Cross Blood Donor App.

To donate blood, individuals need to bring a blood donor card or driver's license or two other forms of identification that are required at check-in. Individuals who are 17 years of age in most states (16 with parental consent where allowed by state law), weigh at least 110 pounds and are in generally good health may be eligible to donate blood. High school students and other donors 18 years of age and younger also must meet certain height and weight requirements.

### About the American Red Cross

The American Red Cross shelters, feeds and provides comfort to victims of disasters; supplies about 40% of the nation's blood; teaches skills that save lives; distributes international humanitarian aid; and supports veterans, military members and their families. The Red Cross is a nonprofit organization that depends on volunteers and the generosity of the American public to deliver its mission. For more information, please visit [redcross.org](http://redcross.org) or [CruzRojAmericana.org](http://CruzRojAmericana.org), or visit us on Twitter at @RedCross.

### THE PAPER OF MONTGOMERY COUNTY

(USPS 022-679)

March 23, 2022 Volume 18 Number 12

Published Wednesdays (except for holidays)  
 Subscription price:  
 \$44/6 mos.; \$79/1 year.

Periodicals Postage Paid at  
 Crawfordsville, Ind.  
 POSTMASTER: Send address  
 changes to The Paper  
 of Montgomery County,  
 127 E Main St. Suite 103,  
 Crawfordsville, IN 47933

127 E Main St. Suite 103,  
 Crawfordsville, IN 47933  
 765-361-0100

## I'm Stronger because of Ben Hur Health & Rehabilitation



Our Moving Forward Rehabilitation program is designed for those striving to restore abilities lost due to stroke, cardiovascular difficulties, orthopedic surgery and other debilitating conditions.

Programs vary in frequency and intensity and include physical, occupational and speech/language therapies. Our goal is to return our participants home safely with the skills they need to continue life on their own terms.

For more information, please call (765) 362-0905.

### Ben Hur HEALTH & REHABILITATION

1375 South Grant Ave.  
 Crawfordsville, IN 47933  
 (765) 362-0905



ASCCare.com



## WELCOMING AMERICA



BUILDING A NATION OF NEIGHBORS

## Immigrant Allies Chosen To Participate In National Nonprofit's Rural Welcoming Initiative

The national nonprofit Welcoming America has chosen Immigrant Allies, a committee of Humans United for Equality (a non-profit organization in Crawfordsville), to participate in their Rural Welcoming Initiative. Multiple communities from across the nation have been selected for participation in the initiative. Through a competitive process, Immigrant Allies was chosen because of its commitment to building a more welcoming and inclusive community.

Immigrants and refugees come to this country searching for safety and opportunities for education, employment, and ultimately, to be part of a thriving community. While some make their new homes in more populous cities, many follow opportunities in smaller cities and more rural parts of the country.

Rural communities often have much to offer these newcomers: steady employment, a reasonable cost of living, a sense of belonging, and for many, the chance to live in a

place that is similar in size to where they come from. Immigrants and refugees feel welcomed when communities have created programs, partnerships, policies, and opportunities that engage them.

Welcoming America will provide Immigrant Allies with technical assistance, coaching, and access to ongoing peer learning opportunities to increase their capacity to create and implement more welcoming policies and practices. Participants will also be granted membership to the Welcoming Network which includes over 300 local government and nonprofit members.

About Immigrant Allies Immigrants play a crucial role in the vitality of our town. As of 2019, 5.3% of Indiana residents and 3.06% (more than 1000 people) of Montgomery County residents were foreign-born. Immigrant Allies aspires to be a bridge connecting the diverse immigrant community with existing residents so that common ground and shared lead-

ership can be realized. We provide translation services, arrange legal aid and transportation, and assist in fundraising for the urgent needs of refugees and immigrants who do not have access to other resources. Chaired by Agata Szczeszak-Brewer, Immigrant Allies has several other core members and volunteers who work with local communities.

About Welcoming America Welcoming America is a nonprofit, nonpartisan organization that leads a movement of inclusive communities becoming more prosperous by ensuring everyone belongs. We believe that all people, including immigrants, are valued contributors and vital to the success of our communities and shared future. Through the Welcoming Network, we work to help communities develop the roadmap they need to create welcoming policies and share new approaches to inclusion to create an environment where everyone can truly thrive.

Thanks for reading The Paper!

**exp REALTY**

**FOR SALE**

Clark Dale  
 765.918.1773  
[william.dale@exprealty.com](mailto:william.dale@exprealty.com)

got stuff?  
 sell it in the classifieds.



**PUBLIC NOTICES**

**North Montgomery Com Sch Corp  
2021 Reports**

North Montgomery Com Sch Corp, Crawfordsville 5835					
Indicator	Corporation Results				State
	'17-'18	'18-'19	'19-'20	'20-'21	Totals
A-F Accountability Grade	B	B	B	N/A	
Student Enrollment	1,896	1,829	1,868	1,831	1,112,611
Non-Waiver Grad Rate	85.9	91.6	92.4	89.7	79.11
Percentage of Career and Technical Diplomas	19.7	22.3	21.1	9.3	9.2
Number of Certified Teachers	114	112	116	114	60,992
Teacher Salary Range - Minimum	\$36,000	\$36,000	\$36,000	\$38,000	\$36,488.26
Teacher Salary Range - Maximum	\$64,500	\$65,500	\$68,500	\$67,500	\$68,273.96
Number of Students in Special Education	378	374	354	378	179,000
Percent of Students in Special Education	19.9	20.4	18.9	20.6	16.7
Number of Students in Gifted and Talented Education	177	157	160	165	127,286
Percent of Students in Gifted and Talented Education	9.3	8.6	8.7	9.0	12.3
Number of Students Receiving Free or Reduced Lunches	757	665	670	629	510,751
Percent of Students Receiving Free or Reduced Price Lunches	39.9	36.4	35.9	34.4	47.0
Number of Limited English Proficiency Students	36	35	43	41	73,112
Percent of Limited English Proficiency Students	1.9	1.9	2.3	2.2	6.6
Percent of Students in Foster Care	0.5	1.26	1.8	1.7	1.65
Number of Students in Alternative Education	25	47	32	37	15,551
Percentage of Students in Alternative Education	1.3	2.5	1.7	2.0	6.8
Number of Students in Career and Technical Program	441	452	396	411	192,951
Percentage of Students in Career and Technical Program	23.26	24.7	21.2	22.4	22.4
Intra District Mobility	0.3	0.3	0.4	0.1	0
Inter District Mobility	6.6	6.1	6.4	6.3	0
Graduation Rate	96.5	95.5	92.4	93.1	87.1
Number of Incidents of Restraint	19	16	22	3	5,702
Number of Incidents of Restraint Involving a School Resource Officer	1	1	0	0	324
Number of Incidents of Seclusion	22	15	19	33	5,457
Number of Incidents of Seclusion Involving a School Resource Officer	1	0	0	0	284

Corporation Goals for Expenditure Categories in Indiana Code 20-42.5-3-5

Pleasant Hill Elementary School, Crawfordsville 6240					
Indicator	School Results				State
	'17-'18	'18-'19	'19-'20	'20-'21	Totals
A-F Accountability Grade	B	B	B	N/A	
Student Enrollment	310	314	309	294	1,112,611
Number of Certified Teachers	17	16	17	16	60,992
Percentage of Students Passing IREAD	84.8	80.4	N/A	92.7	80.4
* Grade 3 Percent Passing ISTEP+/ILEARN Math Standard	72.7	55.6	N/A	75.0	48.7
* Grade 3 Percent Passing ISTEP+/ILEARN Language Arts Standard	81.3	35.6	N/A	70.0	38.7
* Grade 4 Percent Passing ISTEP+/ILEARN Math Standard	69.0	61.3	N/A	51.9	43.7
* Grade 4 Percent Passing ISTEP+/ILEARN Language Arts Standard	69.0	51.6	N/A	59.6	39.6
* Grade 4 Percent Passing ISTEP+/ILEARN Science Standard	61.9	64.5	N/A	29.4	36.1
* Grade 5 Percent Passing ISTEP+/ILEARN Math Standard	66.7	53.5	N/A	48.9	38.6
* Grade 5 Percent Passing ISTEP+/ILEARN Language Arts Standard	62.2	53.5	N/A	48.9	39.5
* Grade 5 Percent Passing ISTEP+/ILEARN Social Science Standard	55.6	39.5	N/A	31.1	38.6
Pupil Enrollment to Certified Employee Ratio	11.4	12.1	13	13.1	12.7
Attendance Rate	96.4	96.6	96.3	97.4	93.3
Number of Students with More Than 10 Unexcused Days Absent	1	0	10	4	0
Number of Students absent greater than 10% of School Year	16	9	14	7	0
Number of Students Suspended	4	1	2	2	43,020
Number of Students Expelled or Suspended involving Drugs, Weapons, or Alcohol	0	0	0	1	2,943
Number of Out of School Suspensions	4	1	0	1	27,981
Number of In School Suspensions	0	0	2	1	20,769

Lester B Sommer Elem Sch, Crawfordsville 6243					
Indicator	School Results				State
	'17-'18	'18-'19	'19-'20	'20-'21	Totals
A-F Accountability Grade	A	A	A	N/A	
Student Enrollment	326	294	315	316	1,112,611
Number of Certified Teachers	17	16	18	16	60,992
Percentage of Students Passing IREAD	94.2	83.6	N/A	92.9	80.4
* Grade 3 Percent Passing ISTEP+/ILEARN Math Standard	38.5	41.7	N/A	52.7	48.7
* Grade 3 Percent Passing ISTEP+/ILEARN Language Arts Standard	70.6	35.0	N/A	41.1	38.7
* Grade 4 Percent Passing ISTEP+/ILEARN Math Standard	62.7	44.7	N/A	43.2	43.7
* Grade 4 Percent Passing ISTEP+/ILEARN Language Arts Standard	62.7	42.6	N/A	56.8	39.6
* Grade 4 Percent Passing ISTEP+/ILEARN Science Standard	58.8	46.8	N/A	45.5	36.1
* Grade 5 Percent Passing ISTEP+/ILEARN Math Standard	70.2	56.3	N/A	31.3	38.6
* Grade 5 Percent Passing ISTEP+/ILEARN Language Arts Standard	77.2	54.2	N/A	48.4	39.5
* Grade 5 Percent Passing ISTEP+/ILEARN Social Science Standard	54.4	33.3	N/A	36.5	38.6
* Grade 10 Percent Passing ISTEP+/ILEARN Science Standard	0	0	0	100.0	31.8
Pupil Enrollment to Certified Employee Ratio	14.1	13.3	13.2	14.6	12.7
Attendance Rate	96.3	96.2	96.2	96.6	93.3
Number of Students with More Than 10 Unexcused Days Absent	2	1	11	4	0
Number of Students absent greater than 10% of School Year	12	17	16	15	0
Number of Students Suspended	1	0	3	1	43,020
Number of Out of School Suspensions	1	0	0	1	27,981
Number of In School Suspensions	0	0	3		

\* In 2014-15 Indiana transitioned to new, more rigorous college-and-career ready standards and a new statewide assessment to measure these standards. Therefore, results are not comparable to previous data.

North Montgomery Middle School, Crawfordsville 6244					
Indicator	School Results				State
	'17-'18	'18-'19	'19-'20	'20-'21	Totals
A-F Accountability Grade	B	B	B	N/A	
Student Enrollment	405	403	415	423	1,112,611
Number of Certified Teachers	29	28	28	28	60,992
* Grade 6 Percent Passing ISTEP+/ILEARN Math Standard	64.0	64.0	N/A	57.2	33.0
* Grade 6 Percent Passing ISTEP+/ILEARN Language Arts Standard	63.1	51.7	N/A	47.4	39.9
* Grade 6 Percent Passing ISTEP+/ILEARN Science Standard	57.7	53.7	N/A	39.0	38.8
* Grade 7 Percent Passing ISTEP+/ILEARN Math Standard	52.3	49.5	N/A	36.6	30.5
* Grade 7 Percent Passing ISTEP+/ILEARN Language Arts Standard	65.2	52.3	N/A	44.9	41.1
* Grade 8 Percent Passing ISTEP+/ILEARN Math Standard	60.1	36.3	N/A	44.8	27.8
* Grade 8 Percent Passing ISTEP+/ILEARN Language Arts Standard	59.5	54.0	N/A	51.4	43.9
Percent of 12th Graders Taking SAT	N/A	0			
Pupil Enrollment to Certified Employee Ratio	12.6	13.4	13.8	13.6	12.7
Attendance Rate	96.1	96.0	96.7	96.0	93.3
Number of Students with More Than 10 Unexcused Days Absent	2	5	4	21	0
Number of Students absent greater than 10% of School Year	22	20	12	41	0
Number of Students Suspended	29	18	12	21	43,020
Number of Students Expelled	4	1	1		
Number of Students Expelled or Suspended involving Drugs, Weapons, or Alcohol	6	0	1	4	2,943
Number of Out of School Suspensions	15	17	11	21	27,981
Number of In School Suspensions	17	3	2		

Sugar Creek Elem Sch, Crawfordsville 6246					
Indicator	School Results				State
	'17-'18	'18-'19	'19-'20	'20-'21	Totals
A-F Accountability Grade	B	B	B	N/A	
Student Enrollment	277	248	285	277	1,112,611
Number of Certified Teachers	16	15	17	17	60,992
Percentage of Students Passing IREAD	93.9	92.3	N/A	90.0	80.4
* Grade 3 Percent Passing ISTEP+/ILEARN Math Standard	57.1	62.2	N/A	60.0	48.7
* Grade 3 Percent Passing ISTEP+/ILEARN Language Arts Standard	71.4	56.8	N/A	45.0	38.7
* Grade 4 Percent Passing ISTEP+/ILEARN Math Standard	60.9	61.4	N/A	60.9	43.7
* Grade 4 Percent Passing ISTEP+/ILEARN Language Arts Standard	52.2	61.4	N/A	63.0	39.6
* Grade 4 Percent Passing ISTEP+/ILEARN Science Standard	54.3	54.6	N/A	56.5	36.1
* Grade 5 Percent Passing ISTEP+/ILEARN Math Standard	67.9	54.8	N/A	72.2	38.6
* Grade 5 Percent Passing ISTEP+/ILEARN Language Arts Standard	54.7	52.4	N/A	63.9	39.5
* Grade 5 Percent Passing ISTEP+/ILEARN Social Science Standard	54.7	52.4	N/A	50.0	38.6
Pupil Enrollment to Certified Employee Ratio	12.5	11.8	12.4	12	12.7
Attendance Rate	96.6	97.2	95.8	96.8	93.3
Number of Students with More Than 10 Unexcused Days Absent	1	5	20	12	0
Number of Students absent greater than 10% of School Year	9	8	23	12	0
Number of Students Suspended	5	5	3	3	43,020
Number of Students Expelled or Suspended involving Drugs, Weapons, or Alcohol	0	0	0	1	2,943
Number of Out of School Suspensions	5	4	3	1	27,981
Number of In School Suspensions	1	1	0	2	20,769
Number of Bullying Incidents	0	0	0	2	1,984

North Montgomery High School, Crawfordsville 6271					
Indicator	School Results				State
	'17-'18	'18-'19	'19-'20	'20-'21	Totals
A-F Accountability Grade	A	A	A	N/A	
Student Enrollment	578	570	544	521	1,112,611
Non-Waiver Grad Rate	85.92	91.61	92.36	89.66	79.11
College and Career Readiness Rate	68.60	73.0	N/A	N/A	
Number of Certified Teachers	40	42	41	40	60,992
Number of Students in Career and Technical Program	441	452	396	411	192,951
Percentage of Students in Career and Technical Program	76.30	0	0	78.9	22.4
* Grade 10 Percent Passing ISTEP+/ILEARN Math Standard	39.3	20.7	N/A	29.7	
* Grade 10 Percent Passing ISTEP+/ILEARN Language Arts Standard	65.2	50.8	N/A	60.3	
* Grade 10 Percent Passing ISTEP+/ILEARN Science Standard	47.7	35.6	N/A	26.7	31.8
Percent of Graduates Granted Waivers	10.9	4.1	0.00	3.7	9.1
SAT Average Score for Graduating Class	N/A	1015	0	996	1078
Percent of graduates receiving Academic Honors Diploma	0	0	0	35.2	39.6
Number of graduates receiving Core 40 Diploma	120	129	124	84	64648
Percent of 12th Graders Taking SAT	N/A	37.8		23.8	22.0
Percent Core 40 with Honors Diploma	48.2	37.8	44.4	35.2	39.6
Percent Core 40 Diploma	87.6	87.2	93.2	77.8	90.1
Pupil Enrollment to Certified Employee Ratio	12.8	11.8	11.8	11.3	12.7
Graduation Rate	96.5	95.5	92.4	93.1	87.1
Attendance Rate	95.2	94.8	96.3	94.0	93.3
Number of Students with More Than 10 Unexcused Days Absent	1	5	3	62	0
Number of Students absent greater than 10% of School Year	65	73	30	93	0
Number of Students Retained in the 9th Grade	0	0	0	0	0
Number of Students Who Have Dropped Out	0	2	10	7	5,586
Number of Students Suspended	47	57	30	31	43,020
Number of Students Expelled	16	20	14	4	891
Number of Students Expelled or Suspended involving Drugs, Weapons, or Alcohol	5	7	4		
Number of Out of School Suspensions	47	57	30	31	27,981
Number of Bullying Incidents	0	3	2	1	1,984

PL4318 3/23 lt hspaxlp

**Paying your CEL&P electric bill is a snap with online bill pay.**

**CLICK. PAY. DONE.**

Visit [www.celp.com](http://www.celp.com), then click on Bill Pay in the upper right corner.

Login to your account to access your bill, then pay using a credit card or eCheck.

Sit back and enjoy the affordable and reliable electricity provided by your hometown utility.



Sign-up is easy: just visit [www.celp.com](http://www.celp.com) today, then click on the BILL PAY option in the upper right corner. Have your account number handy for the sign-up process. Call us at (765) 362-1900, or visit [www.celp.com](http://www.celp.com), for more information on CEL&P's Online Bill Pay.

**WWW.THEPAPER24-7.COM**



# FAITH

**INCLUDE YOUR INFORMATION** The Paper of Montgomery County is asking churches to send us church news by noon on Thursday. Information can be e-mailed to: churchnews@thepaper24-7.com

The following is a listing of church services and various programs that organizations around Montgomery County have sent The Paper. If you would like to have your church information included in this free listing, simply e-mail it to churchnews@thepaper24-7.com by Monday for the Wednesday Print Edition.

There may be closures due to health concerns with the COVID-19 pandemic.

## FREEDOM BAPTIST CHURCH

If you're looking for something special to do this Christmas, Freedom Baptist Church near Waveland has you covered! On Sunday morning Dec 12 at 9:30, we will be featuring acclaimed jazz pianist Luke Gillespie in a free concert of Christmas music. Gillespie is Professor of Jazz Studies at Indiana University Jacobs School of Music and has performed with David Baker, Buselli-Wallarab Jazz Orchestra, Sylvia McNair, Ann-Margret, Arturo Sandoval, and many others. Stick around for coffee and donuts following the program. Freedom Baptist Church is on SR 234 west, just minutes west of the intersection at SR 234 and SR 47. You won't want to miss this!

## NEW MARKET CHRISTIAN CHURCH

Church News for Saturday, January 22, 2021 from New Market Christian Church

The Sanctuary as well as the Drive-in Parking Lot are open for Worship held at 10:00 am. Tony Thomas will speak on "Learn Humbly". His text is from Philippians 4:8.

SUNDAY SCHOOL begins at 9:00 am. COFFEE & DONUT FELLOWSHIP is at 8:30 am the first Sunday of each month. The next fellowship is February 6.

The worship service and Sunday school are open to everyone. Masks are encouraged.

## NEW MARKET FIRST BAPTIST

The Lord's Closet will be open from 9:00 a.m.-12:00 pm. this Saturday. Lots of clothing. This is the last week for winter clothing. We will be replacing them with spring and summer clothing. Everything is free. Donations are accepted at this time also. Sunday morning will be Holy Grounds and Sunday School at 9:00 a.m. There are classes for all ages. Worship service will be at 10:00 a.m. with child care and jr. church. On Wednesday evening at 7:00 p.m. we have Bible Study in which we are studying ACTS. Everyone is welcome to attend. We are located at 206 S. First St. in New Market.

## FIRST CHRISTIAN CHURCH

Sundays: Worship (Casual Traditional/Family Friendly/Childcare) - 10:15 am, Adult Faith Learning/Sunday School - 9:15 am, Good News Cafe - 9:15 am, Wednesdays: WOW! - Mid-week Youth Program (Grades 1-12) - 4:30 - 7 pm, Faith Learning and Dinner, Rev. Darla Goodrich, We are located at: 211 S. Walnut St. Crawfordsville IN 47933 Telephone: 765-362-4812

## YOUNG'S CHAPEL CHRISTIAN CHURCH

If contemporary worship is not your preference, then you Might want to visit us. A small country Bible based church made up of very friendly, compassionate, loving people. A church where everyone knows everyone's name. You will be warmly welcomed here. Why not try us out? 4527 North 200 East, Crawfordsville Bible Study 9:30 a.m. Worship 10:30 am.

## WOODLAND HEIGHTS CHRISTIAN CHURCH

Woodland Heights Christian Church  
468 N Woodland Heights Drive Crawfordsville IN 47933-9689

Telephone Number: 765-362-5284

Fax Number: 765-362-6641

Lead Minister: Tim Lueking

Associate Minister: Steve Wilke

Worship Minister: Wayne Wilkinson

Youth Minister: Bryson Feese

Worship Service Times for Sunday:

Traditional service at 8:15a.m. & Contemporary service at 10:30a.m. All Sunday School classes at 9:30a.m., Children's classes for birth to 5th grade at 10:30a.m. All services will be streamed live on our live.whcc.us platform, Facebook, YouTube, and Twitter.

Redefine Your Priorities - Timothy 2:1-7

## NEW MARKET UNITED METHODIST CHURCH

Reverend William "Bill" Pike Office: 765- 866-0703 email: bill.pike@nmc.org. Please come join our small town church for a friendly church service using hymnals and the rituals of church that you grew up with. 101 East Main Street, P.O. Box 326, New Market, IN 47965.

Office Phone: 765-866-0703 www.newmarketumc.org

Facebook.com New Market United Methodist Church Indiana

Open Hearts-Open Minds-Open Doors Sunday School 9:30 and

Worship Service 10:45

## YOUR MONTGOMERY COUNTY CHURCH DIRECTORY

### Apostolic:

Garfield Apostolic Christian Church  
Rt. #5, Box 11A, Old Darlington Road  
794-4958 or 362-3234  
Worship: 10:30 a.m.  
Sunday School: 9:30 a.m.  
Wednesday Bible Study: 6:30 p.m.  
Pastor Vernon Dowell

### Gateway Apostolic (UPCI)

2208 Traction Rd  
364-0574 or 362-1586  
Sunday School: 10 a.m.

### Moriah Apostolic Church

602 S. Mill St.  
376-0906  
10 a.m. Sunday, 6 p.m. Wednesday  
Pastor Clarence Lee

### New Life Apostolic Tabernacle

1434 Darlington Avenue  
364-1628  
Worship: Sunday 10 a.m.; 6 p.m.  
Sunday: The Voice of Healing & Restoration on 103.9 at 9 a.m.  
Tuesday prayer: 7 p.m.  
Thursday Mid-week: 7 p.m.  
Pastor Terry P. Gobin

### One Way Pentecostal Apostolic Church

364-1421  
Worship 10 a.m.  
Sunday School: 11 a.m.

### Apostolic Pentecostal:

Cornerstone Church  
1314 Danville Ave.  
361-5932  
Worship: 10 a.m.; 6:30 p.m.  
Bible Study: Thursday, 6:30 p.m.

### Grace and Mercy Ministries

257 W. Oak Hill Rd.  
765-361-1641  
Worship: 10 a.m.; 6 p.m.  
Wednesday: 6:30 p.m.  
Sunday School: 11 a.m.  
Co-Pastors Nathan and Peg Miller

### Assembly of God:

Crosspoint Fellowship  
1350 Ladoga Road  
362-0602  
Sunday Services: 10 a.m.  
Wednesdays: 6:30 p.m.

### First Assembly of God Church

2070 Lebanon Rd.  
362-8147 or 362-0051  
Sunday School: 9 a.m.  
Worship: 10:30 a.m.; 6 p.m.  
Wednesday: 6:30 p.m.

### Baptist:

Browns Valley Missionary Baptist Church  
P.O. Box 507, Crawfordsville  
435-3030  
Worship: 9:30 a.m.  
Sunday School: 10:30 a.m.

### Calvary Baptist Church

128 E. CR 400 S  
364-9428  
Sunday School: 9:30 a.m.  
Worship: 10 a.m.; 6 p.m.  
Wednesday Bible Study: 7 p.m.  
Calvary Crusaders Wednesdays: 6:45 p.m.  
Pro-Teen Wednesdays: 7 p.m.  
Pastor Randal Glenn

### East Side Baptist Church

2000 Traction Rd.  
362-1785  
Bible Study: 9 a.m.  
Worship: 10 a.m.; 6 p.m.  
Wednesday: 6:30 p.m. Prime Time  
Teens, Pioneer Clubs; 6:45 p.m. Adult Bible Study  
Rev. Steve Whicker

### Faith Baptist Church

5113 S. CR 200 W  
866-1273  
Sunday School: 9:30 a.m.  
Worship: 10:30 a.m. and 6 p.m.  
Wednesday Prayer Meeting: 7 p.m.  
Pastor Tony Roy

### First Baptist Church

1905 Lebanon Rd.  
362-6504  
Worship: 8:15 a.m.; 10:25 a.m.  
Sunday School: 9:30 a.m.  
High School Youth Sunday: 5 p.m.

### Freedom Baptist Church

6223 W. SR 234  
(765) 435-2177

Worship: 9:30 a.m.  
Sunday School is 10:45 a.m.  
Wednesday Bible Study: 7 p.m.  
Pastor Tim Gillespie

### Fremont St. Baptist Church

1908 E. Fremont St.  
362-2998  
Sunday School: 10 a.m.  
Worship: 11 a.m.; 6 p.m.  
Pastor Dan Aldrich

### Friendship Baptist Church

U.S. 136 and Indiana 55  
362-2483  
Sunday School: 9:15 a.m.  
Worship: 10:30 a.m.; 6 p.m.  
Wednesday Bible Study: 7 p.m.  
Friendship Kids for Christ: 6 p.m.  
Pastor Chris Hortin

### Ladoga Baptist Church

751 Cherry St., Ladoga  
942-2460  
Sunday School 9:30 a.m.  
Worship 10:45 a.m.; 6 p.m.  
Wednesday Bible Study 7 p.m.  
Ron Gardner, Pastor

### Mount Olivet Missionary Baptist

7585 East, SR 236, Roachdale  
676-5891 or (317) 997-3785  
Worship: 10:30 a.m.  
Sunday School: 9:30 a.m.  
Wednesday Evening: 7 p.m.  
Bro. Wally Beam

### New Market Baptist Church

200 S. First St.  
866-0083  
Sunday School: 9 a.m.  
Worship: 10 a.m.  
Children's church and child care provided

### Second Baptist Church

119 1/2 S. Washington St,  
off of PNC Bank.  
363-0875  
Sunday School: 10 a.m.  
Worship: 11 a.m.

### StoneWater Church

120 Plum St., Linden  
339-7300  
Sunday Service: 10 a.m.  
Pastors: Mike Seaman and Steve Covington

### Waynetown Baptist Church

Corner of Plum and Walnut Streets  
234-2398  
Sunday School: 9:30 a.m.  
Fellowship: 10:30 a.m.  
Worship: 11 a.m.  
Children's Church: 11:10 a.m.  
Pastor Ron Raffignone

### Christian:

Alamo Christian Church  
866-7021  
Worship: 10:30 a.m.

### Browns Valley Christian Church

9011 State Road 47 South  
435-2590  
Sunday School: 9 a.m.  
Worship: 10 a.m.

### Byron Christian Church

7512 East 950 North, Waveland  
Sunday School 9 a.m.  
Worship Service 10 a.m.

### Waynetown Christian Union Church

SR 136, then south on CR 650.  
Sunday School: 9:30 a.m.  
Worship: 10:30 a.m.  
New phone #: 765-918-0438  
New Pastor: Paul Morrison

### Congregational Christian Church of Darlington

101 Academy St, P.O. Box 7  
794-4716  
Sunday School: 9:15 a.m.  
Worship: 10:30 a.m.  
Sunday Bible Study: 6 p.m.  
Wed. Prayer: 5:30 p.m. - 7 p.m., Wed Bible Study 7 p.m.  
Kingdom Seekers Youth Group (alternate Sundays)  
Pastor Seth Stultz

### Darlington Christian Church

Main and Washington streets  
794-4558  
Sunday School: 9:30 a.m.  
Worship: 10:30 a.m.; 6 p.m.

### First Christian Church

(Disciples of Christ)

211 S. Walnut St.  
362-4812

SUNDAY: 9:22 a.m. Contemporary  
Cafe worship  
9:30 a.m. Adult Sunday School  
10:40 a.m. Traditional Worship  
WEDNESDAY: 5-7 a.m. Logos Youth  
Dinner & Program  
Pastor: Rev. Darla Goodrich

### Ladoga Christian Church

124 W. Elm St.  
942-2019  
Sunday School: 9 a.m.  
Worship: 10 a.m.; 6 p.m.

### Love Outreach Christian Church

611 Garden St.  
362-6240  
Worship: 10 a.m.  
Wednesday: 7 p.m.  
Pastors Rob and Donna Joy Hughes

### New Hope Chapel of Wingate

275-2304  
Sunday School: 9:30 a.m.  
Worship: 10:30 a.m.  
Bible Study: 6:30 p.m., Wed.  
Youth Group: 5:30 p.m., Wed.  
Homework Class: 4:30 p.m. Wed & Thurs.  
Champs Youth Program: 5:30 p.m. Wed.  
Adult Bible Class: 6:30 p.m. Wed.  
Pastor Duane Mycroft

### New Hope Christian Church

2746 US 231 South  
362-0098  
newhopefortoday.org  
Worship and Sunday School at 9 a.m. & 10:30 a.m.

### New Market Christian Church

300 S. Third St.  
866-0421  
Sunday School: 9 a.m.  
Wednesday evening: Bible Study 6:15,  
Youth 6:15, Choir 7:15  
Pastor Gary Snowden

### New Richmond Christian Church

339-4234  
202 E. Washington St.  
Sunday School: 9:30 a.m.  
Worship: 10:30 a.m.  
Pastor John Kenneson

### New Ross Christian Church

212 N. Main St.  
723-1747  
Worship: 10 a.m.  
Youth Group: 5:30-7 p.m. Wednesday  
Minister Ivan Brown

### Parkersburg Christian Church

86 E. 1150 S., Ladoga  
866-1747  
Sunday School: 9:30 a.m.  
Worship: 10:30 a.m.  
Pastor Rich Fuller

### Providence Christian Church

10735 E 200 S  
723-1215  
Worship: 10 a.m.

### Waveland Christian Church

212 W. Main St.  
435-2300  
Sunday School: 9:30 a.m.  
Worship: 10:30 a.m.

### Waynetown Christian Church

103 W. Walnut St.  
234-2554  
Worship: 10 a.m.  
Sunday School: 9 a.m.

### Whitesville Christian Church

3603 South Ladoga Road  
Crawfordsville, IN 47933  
(765) 362-3896  
New Worship Service Time  
9:00am 1st Service  
10:30am 2nd Service  
Pastor Andy Schindler  
whitesvillechristianchurch.com

### Woodland Heights Christian Church

468 N. Woodland Heights Dr.  
362-5284  
Sunday School: 9:30 a.m.  
Worship: 8:15 a.m. (traditional);  
10:30 a.m. (contemporary)  
Student Ministry: 5 p.m., Sunday  
Pastor Tony Thomas

### Young's Chapel Christian Church

Rt. 6, Crawfordsville  
794-4544

Sunday School: 9:30 a.m.

Worship: 10:30 a.m.

Pastor: Gary Edwards

### Church of Christ:

Church of Christ  
419 Englewood Drive  
362-7128  
Sunday School: 9:30 a.m.  
Worship: 10:30 a.m.; 6 p.m.  
Wednesday Bible Study: 7 p.m.

### Southside Church of Christ

153 E 300 South, east of US 231  
765-720-2816  
Sunday Bible Classes: 9:30 a.m.  
Sunday Morning Worship: 10:30 a.m.  
Sunday Evening Worship: 5 p.m.  
Wednesday Bible Classes: 7 p.m.  
Preacher: Brad Phillips  
Website: southsidechurchofchrist-diana.com

### Church of God:

First Church of God  
711 Curtis St.  
362-3482  
Sunday School: 9:30 a.m.  
Worship: 10:30 a.m.; 6 p.m.  
Pastor Chuck Callahan

### Grace Avenue Church of God

901 S. Grace Ave.  
362-5687  
Sunday School: 9:30 a.m.  
Worship: 10:30 a.m.; 6 p.m.  
Pastor Duane McClure

### Community:

Congregational Christian Church  
402 S. Madison St., Darlington  
794-4716  
Sunday School: 9:15 a.m.  
Worship: 10:30 a.m.

### Crawfordsville Community Church

Fairgrounds on Parke Ave.  
Crawfordsville  
794-4924  
Worship: 10 a.m.  
Men's prayer group, Mondays 6:30 p.m.  
Pastor Ron Threlkeld

### Gravelly Run Friends Church

CR 150 N, 500 E  
Worship: 10 a.m.

### Harvest Fellowship Church

CR 500 S  
866-7739  
Pastor J.D. Bowman  
Worship 10 a.m.

### Liberty Chapel Church

500 N CR 400 W  
275-2412  
Sunday School: 9 a.m.  
Worship: 10 a.m.

### Linden Community Church

321 E. South St., Linden (Hahn's)  
Sunday: 9:15

### Yountsville Community Church

4382 W SR 32  
362-7387  
Sunday School: 9:30 a.m.  
Worship: 10:30 a.m.  
Pastor Alan Goff

### Episcopal:

Bethel African Methodist Episcopal  
213 North St., Crawfordsville  
364-1496

### St. John's Episcopal Church

212 S. Green Street  
765-362-2331  
Sunday Eucharist: 8 a.m. and 10:30 a.m.  
Christian Formation: 9:15 a.m.  
Midweek Eucharist Wednesday: 12:15 p.m.

### Full Gospel:

Church Alive!  
1203 E. Main St.  
362-4312  
Worship: 10 a.m.; Wednesday, 7 p.m.

### Enoch Ministries

922 E. South Boulevard  
Worship: Sunday, 10 a.m.  
Pastor: Jeff Richards

### New Bethel Fellowship

406 Mill St., Crawfordsville  
362-8840  
Pastors Greg and Sherri Maish  
Associate Pastors Dave and Brenda Deckard

Worship 10 a.m.

### Victory Family Church

1133 S. Indiana 47  
765-362-2477  
Worship: 10 a.m.; Wednesday 6:30 p.m.  
Pastor Duane Bryant

### Lutheran:

Christ Lutheran ELCA  
300 W. South Blvd. - 362-6434  
Holy Communion Services: 8 a.m. and 10:30 a.m.  
Sunday School: 9:15 a.m.  
Pastor: Kelly Nelson  
www.christchurchindiana.net

### Holy Cross (Missouri Synod)

1414 E. Wabash Ave.  
362-5599  
Sunday School: 9 a.m.  
Worship: 10:15 a.m.  
Adult Bible Study: 7 p.m., Wed.  
Minister: Rev. Jeffery Stone  
http://www.holycross-crawfordsville.org

### Phanuel Lutheran Church

Lutheran Church Rd., Wallace  
Sunday School: 10:30 a.m.  
Worship: 9:30 a.m.

### United Methodist:

Christ's United Methodist  
909 E. Main St.  
362-2383  
Sunday School: 10 a.m.  
Worship: 11 a.m.

### Darlington United Methodist Church

Harrison St.  
794-4824  
Worship: 9:00 a.m.  
Fellowship: 10:00 a.m.  
Sunday School: 10:30 a.m.  
Pastor Dirk Caldwell

### First United Methodist Church

212 E. Wabash Ave.  
362-4817  
Sunday School: 10 a.m.  
Traditional Worship: 9 a.m.  
The Gathering: 11:10 a.m.  
Rev. Brian Campbell

### Linden United Methodist Church

609 South Main St. P.O. Box 38  
339-734



**PUBLIC NOTICES**

**Crawfordsville Com Schools  
2021 Reports**

Crawfordsville Com Schools, Crawfordsville 5855					
Indicator	Corporation Results				State
	'17-'18	'18-'19	'19-'20	'20-'21	Totals
A-F Accountability Grade	C	C	C	N/A	
Student Enrollment	2,554	2,597	2,617	2,546	1,112,611
Non-Waiver Grad Rate	86.4	63.4	85.4	78.0	79.11
Percentage of Career and Technical Diplomas	3.2	4.4	4.6	4.2	9.2
Number of Certified Teachers	160	165	166	171	60,992
Teacher Salary Range - Minimum	\$27,600	\$27,600	\$36,100	\$38,300	\$36,488.26
Teacher Salary Range - Maximum	\$65,600	\$66,700	\$68,000	\$70,200	\$68,273.96
Number of Students in Special Education	581	618	603	610	179,000
Percent of Students in Special Education	22.8	23.8	23.0	24.0	16.7
Number of Students in Gifted and Talented Education	393	313	377	288	127,286
Percent of Students in Gifted and Talented Education	15.4	12.1	14.4	11.3	12.3
Number of Students Receiving Free or Reduced Lunches	1,598	1,656	1,667	1,573	510,751
Percent of Students Receiving Free or Reduced Price Lunches	62.6	63.8	63.7	61.8	47.0
Number of Limited English Proficiency Students	212	212	235	265	73,112
Percent of Limited English Proficiency Students	8.3	8.2	9.0	10.4	6.6
Percent of Students in Foster Care	0.9	2.27	2	2.4	1.65
Number of Students in Alternative Education	54	66	63	61	15551
Percentage of Students in Alternative Education	2.1	2.5	2.4	2.4	6.8
Number of Students in Career and Technical Program	302	293	362	289	192,951
Percentage of Students in Career and Technical Program	11.82	11.3	13.8	11.4	22.4
Intra District Mobility	0	0	0	0	0
Inter District Mobility	8.1	9.3	6.2	7.2	0
Graduation Rate	93.5	84.9	86.0	82.7	87.1
Number of Incidents of Restraint	29	53	41	18	5,702
Number of Incidents of Restraint Involving a School Resource Officer	6	3	7	1	324
Number of Incidents of Seclusion	13	46	28	20	5,457
Number of Incidents of Seclusion Involving a School Resource Officer	5	1	1	1	284

Crawfordsville Sr High School, Crawfordsville 6277					
Indicator	School Results				State
	'17-'18	'18-'19	'19-'20	'20-'21	Totals
A-F Accountability Grade	B	B	B	N/A	
Student Enrollment	695	697	693	676	1,112,611
Non-Waiver Grad Rate	86.39	63.44	85.39	78.03	79.11
College and Career Readiness Rate	57.60	61.4	N/A	N/A	
Number of Certified Teachers	48	52	52	52	60,992
Number of Students in Career and Technical Program	302	293	362	289	192,951
Percentage of Students in Career and Technical Program	43.45	0	0	42.8	22.4
* Grade 10 Percent Passing ISTEP+/ILEARN Math Standard	37.4	31.8	N/A	25.7	
* Grade 10 Percent Passing ISTEP+/ILEARN Language Arts Standard	49.0	52.9	N/A	54.6	
* Grade 10 Percent Passing ISTEP+/ILEARN Science Standard	20.0	37.8	N/A	26.0	31.8
Percent of Graduates Granted Waivers	7.6	25.3	0.65	5.6	9.1
SAT Average Score for Graduating Class	N/A	1072	0	1165	1078
Percent of graduates receiving Academic Honors Diploma	0	0	0	32.9	39.6
Number of graduates receiving Core 40 Diploma	98	140	128	98	64648
Percent of 12th Graders Taking SAT	N/A	25.3		21.2	22.0
Percent Core 40 with Honors Diploma	30.4	33.5	34.0	32.9	39.6
Percent Core 40 Diploma	62.0	88.6	83.7	68.5	90.1
Pupil Enrollment to Certified Employee Ratio	13	11.9	12.1	12.2	12.7
Graduation Rate	93.5	84.9	86.0	82.7	87.1
Attendance Rate	94.9	94.0	95.2	94.9	93.3
Number of Students with More Than 10 Unexcused Days Absent	21	47	21	52	0
Number of Students absent greater than 10% of School Year	77	111	70	92	0
Number of Students Retained in the 9th Grade	0	0	0	0	0
Number of Students Who Have Dropped Out	7	21	19	25	5,586
Number of Students Suspended	125	124	87	47	43,020
Number of Students Expelled or Suspended involving Drugs, Weapons, or Alcohol	4	9	4	2	2,943
Number of Out of School Suspensions	14	12	4	3	27,981
Number of In School Suspensions	122	120	87	46	20,769

Anna Willson School, Crawfordsville 6305					
Indicator	School Results				State
	'17-'18	'18-'19	'19-'20	'20-'21	Totals
Student Enrollment	114	137	138	118	1,112,611
Number of Certified Teachers	4	4	4	3	60,992

\* In 2014-15 Indiana transitioned to new, more rigorous college-and-career ready standards and a new statewide assessment to measure these standards. Therefore, results are not comparable to previous data

PL4322 3/23 1st hspaxdp

Crawfordsville Middle School, Crawfordsville 6281					
Indicator	School Results				State
	'17-'18	'18-'19	'19-'20	'20-'21	Totals
A-F Accountability Grade	C	C	C	N/A	
Student Enrollment	524	552	561	592	1,112,611
Number of Certified Teachers	37	36	38	41	60,992
* Grade 6 Percent Passing ISTEP+/ILEARN Math Standard	46.3	30.6	N/A	12.9	33.0
* Grade 6 Percent Passing ISTEP+/ILEARN Language Arts Standard	53.7	34.2	N/A	18.9	39.9
* Grade 6 Percent Passing ISTEP+/ILEARN Science Standard	48.1	40.4	N/A	19.9	38.8
* Grade 7 Percent Passing ISTEP+/ILEARN Math Standard	39.2	33.3	N/A	20.8	30.5
* Grade 7 Percent Passing ISTEP+/ILEARN Language Arts Standard	51.2	37.8	N/A	32.0	41.1
* Grade 8 Percent Passing ISTEP+/ILEARN Math Standard	50.3	31.5	N/A	14.1	27.8
* Grade 8 Percent Passing ISTEP+/ILEARN Language Arts Standard	63.5	45.9	N/A	37.0	43.9
* Grade 10 Percent Passing ISTEP+/ILEARN Science Standard	0	0	N/A		
Pupil Enrollment to Certified Employee Ratio	12.4	13.8	12.7	13.4	12.7
Attendance Rate	95.9	95.6	96.4	96.5	93.3
Number of Students with More Than 10 Unexcused Days Absent	12	8	6	28	0
Number of Students absent greater than 10% of School Year	30	39	18	30	0
Number of Students Suspended	63	60	45	46	43,020
Number of Students Expelled	0	0	2	1	891
Number of Students Expelled or Suspended involving Drugs, Weapons, or Alcohol	3	5	2	3	2,943
Number of Out of School Suspensions	18	28	16	31	27,981
Number of In School Suspensions	56	49	38	26	20,769
Number of Bullying Incidents	0	3	0	2	1,984

Mollie B Hoover Elem Sch, Crawfordsville 6289					
Indicator	School Results				State
	'17-'18	'18-'19	'19-'20	'20-'21	Totals
A-F Accountability Grade	C	C	C	N/A	
Student Enrollment	384	406	408	384	1,112,611
Number of Certified Teachers	23	25	26	27	60,992
* Grade 4 Percent Passing ISTEP+/ILEARN Math Standard	56.4	37.1	N/A	37.4	43.7
* Grade 4 Percent Passing ISTEP+/ILEARN Language Arts Standard	58.0	25.2	N/A	27.7	39.6
* Grade 4 Percent Passing ISTEP+/ILEARN Science Standard	57.2	34.5	N/A	35.9	36.1
* Grade 5 Percent Passing ISTEP+/ILEARN Math Standard	58.3	36.1	N/A	31.1	38.6
* Grade 5 Percent Passing ISTEP+/ILEARN Language Arts Standard	52.4	40.2	N/A	25.4	39.5
* Grade 5 Percent Passing ISTEP+/ILEARN Social Science Standard	57.8	46.2	N/A	34.5	38.6
Pupil Enrollment to Certified Employee Ratio	14.2	13.5	13.1	13.2	12.7
Attendance Rate	95.9	95.4	96.0	96.7	93.3
Number of Students with More Than 10 Unexcused Days Absent	6	5	12	23	0
Number of Students absent greater than 10% of School Year	20	29	22	25	0
Number of Students Suspended	30	48	37	14	43,020
Number of Students Expelled or Suspended involving Drugs, Weapons, or Alcohol	1	5	2		
Number of Out of School Suspensions	10	23	11	6	27,981
Number of In School Suspensions	24	37	33	9	20,769

Laura Hose Elementary School, Crawfordsville 6293					
Indicator	School Results				State
	'17-'18	'18-'19	'19-'20	'20-'21	Totals
A-F Accountability Grade	C	C	C	N/A	
Student Enrollment	437	393	408	399	1,112,611
Number of Certified Teachers	28	27	27	28	60,992
Pupil Enrollment to Certified Employee Ratio	15	13.5	14	13.3	12.7
Attendance Rate	94.7	95.0	95.3	95.4	93.3
Number of Students with More Than 10 Unexcused Days Absent	8	20	6	27	0
Number of Students absent greater than 10% of School Year	43	37	27	40	0
Number of Students Suspended	7	7	1	2	43,020
Number of Out of School Suspensions	7	7	1	2	27,981

Meredith Nicholson Elem Sch, Crawfordsville 6301					
Indicator	School Results				State
	'17-'18	'18-'19	'19-'20	'20-'21	Totals
A-F Accountability Grade	C	C	C	N/A	
Student Enrollment	400	412	409	377	1,112,611
Number of Certified Teachers	23	24	25	26	60,992
Percentage of Students Passing IREAD	71.8	81.0	N/A	72.2	80.4
* Grade 3 Percent Passing ISTEP+/ILEARN Math Standard	43.1	46.0	N/A	38.7	48.7
* Grade 3 Percent Passing ISTEP+/ILEARN Language Arts Standard	41.3	34.1	N/A	24.1	38.7
Pupil Enrollment to Certified Employee Ratio	15.3	15.2	13.6	13.9	12.7
Attendance Rate	95.1	95.8	96.4	96.4	93.3
Number of Students with More Than 10 Unexcused Days Absent	11	10	12	39	0
Number of Students absent greater than 10% of School Year	33	25	14	29	0
Number of Students Suspended	22	25	17	6	43,020
Number of Out of School Suspensions	16	19	8	6	27,981
Number of In School Suspensions	10	9	11		

**Thanks for reading The Paper!**

# Classifieds

**765-361-0100 ext. 15 | class@thepaper24-7.com**  
**Monday - Friday 9 a.m. to 4 p.m.**

**Deadlines for next-day publication:**  
**Line ads: 1 p.m. | Display ads 11 a.m.**

2, 3 and 4 bedroom homes,  
Contract Sales, Hooks  
(765) 918-8700, (765) 362-0185  
www.hookshomesindiana.com

**need a job?**  
Find one in the classifieds.  
**765.361.8888**

Smart Home Installations? Geeks on Site will install your WIFI, Doorbells, Cameras, Home Theater Systems & Gaming Consoles. \$20 OFF coupon 42537! (Restrictions apply) 855-668-0067

Portable Oxygen Concentrator May be Covered by Medicare! Reclaim independence and mobility with the compact design and long-lasting battery of Inogen One. Free information kit! Call 877-930-3271

LIVE PAIN FREE with CBD products from AceWellness. We guarantee highest quality, most competitive pricing on CBD products. Softgels, Oils, Skincare, Vape & more. Coupon Code: PRINT20 Call Now 833-226-3105

DISH Network. \$64.99 for 190 Channels! Blazing Fast Internet, \$19.99/mo. (where available.) Switch & Get a FREE \$100 Visa Gift Card. FREE Voice Remote. FREE HD DVR. FREE Streaming on ALL Devices. Call today! 1-855-551-9764

SERIOUSLY INJURED in an AUTO ACCIDENT? Let us fight for you! Our network has recovered millions for clients! Call today for a FREE consultation! 844-517-6414

Earthlink High Speed Internet. As Low As \$49.95/month (for the first 3 months.) Reliable High Speed Fiber Optic Technology. Stream Videos, Music and More! Call Earthlink Today 1-855-977-7069

ATTENTION OXYGEN THERAPY USERS! Inogen One G4 is capable of full 24/7 oxygen delivery. Only 2.8 pounds. FREE information kit. Call 855-965-4916

High-Speed Internet. We instantly compare speed, pricing, availability to find the best service for your needs. Starting at \$39.99/month! Quickly compare offers from top providers. Call 1-844-961-0666

New Starting Base Pay - .60 cpm w/ option to make .70 cpm for Class A CDL Flatbed Drivers, Excellent Benefits, Home Weekends, Call 800-648-9915 or www.boydandsons.com

4G LTE Home Internet Now Available! Get GotW3 with lightning fast speeds plus take your service with you when you travel! As low as \$109.99/mo! 1-877-327-0930

DONATE YOUR CAR TO CHARITY! FAST FREE PICK-UP-24 HR RESPONSE! Help Children in Need, Support Breast Cancer Education/Prevention or Veterans. Tax Deduction 844-820-9099

DIAGNOSED WITH LUNG CANCER? You may qualify for a substantial cash award. NO Obligation, NO risk! We've recovered millions. Let us help you!! Call 24/7, 844-284-4920

Looking to SELL your Home? Save time & money, connect with the Top Agents in your area to get more MONEY and close FASTER! Call 317-854-9781

Wesley Financial Group, LLC - Timeshare Cancellation Experts - Over \$50,000,000 in timeshare debt and fees cancelled in 2019. Get free informational package and learn how to get rid of your timeshare! Free consultations. Over 450 positive reviews. Call 877-329-1207

Never Pay For Covered Home Repairs Again! Complete Care Home Warranty COVERS ALL MAJOR SYSTEMS AND APPLIANCES. 30 DAY RISK FREE. \$200.00 OFF 2 FREE Months! 1-855-408-3894

COMPUTER ISSUES? GEEKS ON SITE provides FREE diagnosis REMOTELY 24/7 SERVICE DURING COVID19. No home visit necessary. \$40 OFF with coupon 86407! Restrictions apply. 888-715-8176

Need Help with Family Law? Can't Afford a \$5,000 Retainer? www.familycourtdirect.com/ Family/Law - Low Cost Legal Services - Pay As You Go - As low as \$750-\$1,500 - Get Legal Help Now! Call 1-888-417-4602 Mon-Fri 7am to 4 pm PCT

Denied Social Security Disability? Appeal! If you're 50+, filed for SSD and denied, our attorneys can help get you approved! No money out of pockets! Call 1-855-995-4758

Thinking about installing a new shower? American Standard makes it easy. FREE design consultation. Enjoy your shower again! Call 1-855-475-0534 today to see how you can save \$1,000 on installation, or visit www.newshowerdeal.com/hoosier

Directv Stream - The Best of Live & On-Demand On All Your Favorite Screens. CHOICE Package, \$84.99/mo for 12months. Stream on 20 devices at once in your home. HBO Max FREE for 1 yr (w/CHOICE Package or higher.) Call for more details today! (some restrictions apply) Call IVS 1-844-412-9997

Guaranteed Life Insurance! (Ages 50 to 80). No medical exam. Affordable premiums never increase. Benefits never decrease. Policy will only be cancelled for non-payment. 833-535-1043

Become a Published Author. We want to Read Your Book! Dorrance Publishing-Trustee by Authors Since 1920. Book manuscript submissions currently being reviewed. Comprehensive Services: Consultation, Production, Promotion and Distribution. Call for Your Free Author's Guide 1-888-965-1444 or visit http://dorranceinfo.com/hoosier

DIRECTV for \$69.99/mo for 12 months with CHOICE Package. Watch your favorite live sports, news & entertainment anywhere. One year of HBO Max FREE. Directv is #1 in Customer Satisfaction (JD Power & Assoc.) Call for more details! (some restrictions apply) Call 1-888-885-8931



PUBLIC NOTICES

2021 School Corporation Annual Performance Report (APR)

Table with 2 columns: Category and Description. Includes sections for General Explanations, Definitions, Corporation Level & General School Data, High School Data, and Elementary/Middle School Data.

STATE OF INDIANA ) IN MONTGOMERY SUPERIOR COURT 2
) SS:
MONTGOMERY COUNTY ) CAUSE NO. 54D02-2203-PL-000171
DAKOTA W. DAVIS and )
STACY L. WALTERS, )
Petitioners, )
VS )
HEIRS OF RICHARD C. HELMS )
AND/OR )
HARRIETT V. HELMS )
COMPLAINT TO QUIET TITLE
Comes now Petitioners, Dakota W. Davis and Stacy L. Walters, and after first being duly sworn upon their oath, and with counsel, William A. Goebel, alleges and say:

TO THE OWNERS OF THE WITHIN DESCRIBED REAL ESTATE AND ALL INTERESTED PARTIES
NOTICE OF SHERIFF'S SALE
By virtue of a certified copy of a decree to me, directed from the Clerk of the Circuit Court of Montgomery County, Indiana, in Cause No. 54C01-1912-MF-001324, wherein Wilmington Savings Fund Society, FSB, As Trustee of Stanwich Mortgage Loan Trust 1 was Plaintiff, and Emily A. Vanhook, AKA Emily Vanhook, Brady R. Vanhook, AKA Brady Vanhook and Capital One Bank were Defendants, requiring me to make the sum as provided for in said Decree with interest and cost, I will expose at public sale to the highest bidder on the 13th day of April, 2022, at the hour of 10:00 a.m., or as soon thereafter as is possible, at Sheriff's Office at 600 Memorial Drive, Crawfordsville, IN 47933, the fee simple of the whole body of Real Estate in Montgomery County, Indiana.

NOTICE OF ADOPTION
To the taxpayers of Montgomery County, Indiana.
You are hereby notified that on February 28, 2022, the Board of County Commissioners of Montgomery County, Indiana, pursuant to notice heretofore given, and under and by virtue of Indiana Code §36-9-14.5 and §6-1.1-41, duly adopted a plan whereby a Cumulative Capital Development Fund was re-established to provide for the: construction, remodeling and repair of the courthouse, construction, repair, remodeling, enlargement of and equipment for a county jail or juvenile detention facility, the purchase, lease or payment of all or part of the motor vehicles for the community corrections program, purchase, construction and maintenance of public buildings and equipment therefor, acquisition of land and improvements that are necessary for construction of public buildings, for the demolition of any improvements on land to be acquired to level grade and prepare land for construction of a public building, provide funds for a cumulative drainage fund, acquire land or rights-of-way to be used for public ways or sidewalks, construction and maintenance of public ways or sidewalks, acquire land or rights-of-way for the construction of sanitary sewers or storm sewers, or both, to construct or maintain sanitary sewers or storm sewers or both, to purchase, lease or pay for all or part of a utility, to acquire, by purchase or lease, land, buildings or rights-of-way for the use of any utility that is acquired or owned by the County, to purchase or acquire land, with or without buildings, for park or recreational purposes, to purchase, lease or pay all or part of the purchase price of motor vehicles for the use or any combination of the police, community corrections program or fire department, to retire in whole or part or in part any general obligation bonds of the County, to purchase or lease equipment and other non-consumable personal property needed for any public transportation use, to purchase or lease equipment to be used to illuminate a public way or sidewalk, to purchase, lease, upgrade, maintain or repair computer hardware, computer software, wiring and computer networks, communication access systems used to connect with computer networks or electronic gateways, to pay for the services of full-time or part-time computer maintenance employees, to conduct nonrecurring in-service technology training of employees, and to purchase body armor for active members of the County police department.

NOTICE OF ADOPTION
To the taxpayers of Montgomery County, Indiana.
You are hereby notified that on February 28, 2022, the Board of County Commissioners of Montgomery County, Indiana, pursuant to notice heretofore given, and under and by virtue of Indiana Code §8-16-3 and §6-1.1-41, duly adopted a plan whereby a Cumulative Bridge Fund was re-established to provide for the construction, repair, maintenance and inspection of bridges in Montgomery County.

NOTICE OF OPEN ESTATE
Notice is hereby given that, on the 7th day of March, 2022, Lisa Lewis, was appointed Personal Representative of the Estate of Mary E. Lewis, deceased, who died on the 18th day of February, 2022, and authorized to administer said estate without court supervision.

WERNLE, RISTINE & AYERS
James E. Ayers, #2491-54
309 Dubois Avenue
P.O. Box 874
Crawfordsville, IN 47933
(765) 362-2640
FAX: (765) 362-8796

Thank You for Reading The Paper!
www.thepaper24-7.com

NOTICE MEADOW SALES
THE BOOT AND CARHARTT STORE HAS MOVED
TO A NEW STORE WITH 45% MORE ROOM
ABOUT 10 MINUTES SOUTH TO 1916 N NYESVILLE RD, ROCKVILLE, IN 47872
SAVE \$40-\$60 OFF
THE SUGGESTED RETAIL PRICE OF MOST RED WING SHOES & WORK BOOTS
\$20 REBATE ON CARHARTT WITH THE PURCHASE OF \$200 OF CARHARTTS

NOTICE TO TAXPAYERS OF HEARING ON PROPOSED CUMULATIVE FIREFIGHTING BUILDING & EQUIPMENT FUND
Notice is hereby given to the taxpayers of Clark Township, Montgomery County, Indiana, that the Clark Township Advisory Board will consider at 128 E. Main St., Ladoga IN 47954 (Library) at 10 o'clock am on Monday, March 28, 2022, the establishment of a Cumulative Firefighting Building & Equipment Fund under the provisions of Indiana Code 36-8-14 for the purposes as follows: For all uses as set out in IC 36-8-14.

Turn laundry day into laundry hour!
Head to Wash 'N Go, where you will find rows of clean washers and dryers just waiting to make quick work of your wash day. We have small and large capacity machines that will handle up to 80 pounds of laundry.
Don't struggle with dropping quarters! Use our easy Pay Central payment kiosk with bills or coins!
WASH 'N GO Coin Laundry
Open 7 Days a Week • 7am - 10pm
208 N. Pine Street
(Behind Circle K Station On Darlington Ave.)



**Vacation, Gifts, Tuition, Bills, Home Improvements & More!**



**Home Equity Line of Credit**  
Whatever You Dream!



**Bainbridge: 765-522-6216** | **Crawfordsville: 765-362-9555**  
**Roachdale: 765-522-1000** | **South Blvd: 765-362-9555**  
**Russellville: 765-435-2620** | **Downtown: 765-362-4900**

Tri-County Bank NMLS: #422911  
 tricountybank.net




**ThePaper24-7.com**

**PUBLIC NOTICES**

**PUBLIC NOTICES**

**NOTICE TO TAXPAYERS MONTGOMERY COUNTY COUNCIL MEETING**

Notice is hereby given the Taxpayers of Montgomery County, Indiana, that the proper legal officers of Montgomery County will consider the following additional appropriations in excess of the 2021 Budget Order from the DLGF at the regular Council meeting on April 12, 2022 at 9:00 a.m. at either 100 E Main Street, Room 103, or 1580 Constitution Row, Crawfordsville, Indiana (depending on construction completion) and also virtually at:  
<https://meet.goto.com/348679045>  
 Or dial in by phone at:  
 United States (Toll Free): 1 866 899 4679  
 Access Code: 348-679-045

Fund	Fund Description	Dept #	Dept. Description	Account	Account Description	Additional Amount Requested
1000	County General	0008	Assessor	11100	Elected Official	\$2,500.00
		0008 Total				\$2,500.00
1000	County General	9655	EMA	30127	Emergency Operation Center	\$122.00
		9655 Total				\$122.00
1170	LIT Public Service	0005	Sheriff	30017	Communications	\$32,916.96
		0005 Total				\$32,916.96
1181	Plat Book	0002	Auditor	30050	Contractual Services	\$20,000.00
		0002 Total				\$20,000.00
4900	Central Comms Center	0303	CCC	44500	Equipment	\$7,701.64
		0303 Total				\$7,701.64
9199	Court Interpreter Grant	0202	Superior Court 2	30051	Interpreter	\$1,089.08
		0202 Total				\$1,089.08
<b>TOTAL:</b>						<b>\$64,329.68</b>

Taxpayers represented virtually at such meeting shall have a right to be heard. The additional appropriations as finally made will be referred to the Department of Local Government Finance (DLGF). The DLGF will make a written determination as to the sufficiency of funds to support the appropriations made within fifteen (15) days of receipt of a Certified Copy of the action taken.  
 This will be considered a work session for the Board of Commissioners in conjunction with the scheduled Council meeting.  
 Dated this 03/21/2022  
 Jennifer Andel  
 Auditor, Montgomery County

PL4323 3/23 It hspaxlp

**South Montgomery Com Sch Corp 2021 Reports**

**South Montgomery Com Sch Corp, New Market 5845**

Indicator	Corporation Results				State
	'17-'18	'18-'19	'19-'20	'20-'21	Totals
A-F Accountability Grade	A	A	A	N/A	
Student Enrollment	1,691	1,716	1,696	1,647	1,112,611
Non-Waiver Grad Rate	87.4	92.4	88.4	86.6	79.11
Percentage of Career and Technical Diplomas	2.3	4.3	5.4	6.1	9.2
Number of Certified Teachers	104	105	111	107	60,992
Teacher Salary Range - Minimum	\$36,029	\$36,390	\$36,390	\$38,300	\$36,488.26
Teacher Salary Range - Maximum	\$62,699	\$63,199	\$67,699	\$71,353	\$68,273.96
Number of Students in Special Education	304	310	295	289	179,000
Percent of Students in Special Education	18.0	18.1	17.4	17.5	16.7
Number of Students in Gifted and Talented Education	252	279	282	259	127,286
Percent of Students in Gifted and Talented Education	14.9	16.3	16.7	15.7	12.3
Number of Students Receiving Free or Reduced Lunches	690	670	692	591	510,751
Percent of Students Receiving Free or Reduced Price Lunches	40.8	39.0	40.8	35.9	47.0
Number of Limited English Proficiency Students	1	3	5	2	73,112
Percent of Limited English Proficiency Students	0.1	0.2	0.3	0.1	6.6
Percent of Students in Foster Care	0.7	1.22	1.4	1.3	1.65
Number of Students in Alternative Education	40	57	40	77	15,551
Percentage of Students in Alternative Education	2.3	3.3	2.3	4.7	6.8
Number of Students in Career and Technical Program	386	384	396	341	192,951
Percentage of Students in Career and Technical Program	22.83	22.4	23.3	20.7	22.4
Intra District Mobility	0.2	0.7	1	0.3	0
Inter District Mobility	8.4	7.7	6.4	5.4	0
Graduation Rate	94.8	97.5	88.4	95.8	87.1
Number of Incidents of Restraint	18	18	4	18	5,702
Number of Incidents of Restraint Involving a School Resource Officer	4	7	2	3	324
Number of Incidents of Seclusion	28	3	19	30	5,457
Number of Incidents of Seclusion Involving a School Resource Officer	2	3	0	3	284

Corporation Goals for Expenditure Categories in Indiana Code 20-42.5-3-5

**Ladoga Elementary School, New Market 6233**

Indicator	School Results				State
	'17-'18	'18-'19	'19-'20	'20-'21	Totals
A-F Accountability Grade	A	A	A	N/A	
Student Enrollment	212	193	201	182	1,112,611
Number of Certified Teachers	13	13	12	12	60,992
Percentage of Students Passing IREAD	100.0	97.4	N/A	96.3	80.4
* Grade 3 Percent Passing ISTEP+/ ILEARN Math Standard	86.7	84.2	N/A	77.8	48.7
* Grade 3 Percent Passing ISTEP+/ ILEARN Language Arts Standard	76.7	52.6	N/A	37.0	38.7
* Grade 4 Percent Passing ISTEP+/ ILEARN Math Standard	81.1	81.5	N/A	70.0	43.7
* Grade 4 Percent Passing ISTEP+/ ILEARN Language Arts Standard	73.0	70.4	N/A	46.7	39.6
* Grade 4 Percent Passing ISTEP+/ ILEARN Science Standard	81.1	48.2	N/A	33.3	36.1
* Grade 5 Percent Passing ISTEP+/ ILEARN Math Standard	95.0	73.5	N/A	63.9	38.6
* Grade 5 Percent Passing ISTEP+/ ILEARN Language Arts Standard	85.0	41.2	N/A	55.6	39.5
* Grade 5 Percent Passing ISTEP+/ ILEARN Social Science Standard	80.0	52.9	N/A	52.8	38.6
* Grade 6 Percent Passing ISTEP+/ ILEARN Math Standard	80.8	0	N/A		
* Grade 6 Percent Passing ISTEP+/ ILEARN Language Arts Standard	76.9	0	N/A		
* Grade 6 Percent Passing ISTEP+/ ILEARN Science Standard	61.5	0	N/A		
Pupil Enrollment to Certified Employee Ratio	12.4	12	11.5	11.1	12.7
Attendance Rate	96.0	96.3	96.8	97.7	93.3
Number of Students with More Than 10 Unexcused Days Absent	28	18	11	2	0
Number of Students absent greater than 10% of School Year	13	7	2	2	0
Number of Students Suspended	0	12	7	3	43,020
Number of Out of School Suspensions	0	10	3	2	27,981
Number of In School Suspensions	0	5	5	1	20,769

**Southmont Jr High School, New Market 6261**

Indicator	School Results				State
	'17-'18	'18-'19	'19-'20	'20-'21	Totals
A-F Accountability Grade	B	B	B	N/A	
Student Enrollment	253	394	378	359	1,112,611
Number of Certified Teachers	27	37	36	37	60,992
* Grade 6 Percent Passing ISTEP+/ ILEARN Math Standard	0	56.2	N/A	51.4	33.0
* Grade 6 Percent Passing ISTEP+/ ILEARN Language Arts Standard	0	52.3	N/A	51.4	39.9
* Grade 6 Percent Passing ISTEP+/ ILEARN Science Standard	0	60.0	N/A	43.6	38.8
* Grade 7 Percent Passing ISTEP+/ ILEARN Math Standard	71.2	42.9	N/A	42.0	30.5
* Grade 7 Percent Passing ISTEP+/ ILEARN Language Arts Standard	74.2	50.8	N/A	42.9	41.1
* Grade 8 Percent Passing ISTEP+/ ILEARN Math Standard	70.4	43.0	N/A	34.1	27.8
* Grade 8 Percent Passing ISTEP+/ ILEARN Language Arts Standard	75.2	53.9	N/A	47.0	43.9
Pupil Enrollment to Certified Employee Ratio	9.7	12.3	10.8	10.5	12.7
Attendance Rate	95.7	95.0	96.1	94.6	93.3
Number of Students with More Than 10 Unexcused Days Absent	2	10	6	54	0
Number of Students absent greater than 10% of School Year	23	43	19	49	0
Number of Students Suspended	15	26	14	23	43,020
Number of Students Expelled	0	1	1		
Number of Out of School Suspensions	10	26	14	23	27,981
Number of Students Expelled	0	0	1	1	1,989
Number of Students Expelled or Suspended involving Drugs, Weapons, or Alcohol	0	3	3		
Number of Out of School Suspensions	10	10	26	14	55,563

**Southmont Sr High School, New Market 6257**

Indicator	School Results				State
	'17-'18	'18-'19	'19-'20	'20-'21	Totals
A-F Accountability Grade	A	A	A	N/A	
Student Enrollment	528	507	489	488	1,112,611
Non-Waiver Grad Rate	87.41	92.44	88.36	86.55	79.11
College and Career Readiness Rate	85.90	84.5	N/A	N/A	
Number of Certified Teachers	44	44	47	43	60,992
Number of Students in Career and Technical Program	386	384	396	341	192,951
Percentage of Students in Career and Technical Program	73.11	0	0	69.9	22.4
* Grade 10 Percent Passing ISTEP+/ ILEARN Math Standard	42.9	30.3	N/A	28.6	
* Grade 10 Percent Passing ISTEP+/ ILEARN Language Arts Standard	63.6	58.2	N/A	56.1	
* Grade 10 Percent Passing ISTEP+/ ILEARN Science Standard	55.6	38.6	N/A	46.8	31.8
Percent of Graduates Granted Waivers	7.8	5.2	0.00	9.6	9.1
SAT Average Score for Graduating Class	N/A	1022	0	1029	1078
Percent of graduates receiving Academic Honors Diploma	0	0	0	28.1	39.6
Number of graduates receiving Core 40 Diploma	115	102	106	104	64,648
Percent of 12th Graders Taking SAT	N/A	37.1		22.2	22.0
Percent Core 40 with Honors Diploma	33.6	25.9	31.8	28.1	39.6
Percent Core 40 Diploma	89.8	87.9	82.2	91.2	90.1
Pupil Enrollment to Certified Employee Ratio	11.2	11.2	11.1	11.6	12.7
Graduation Rate	94.8	97.5	88.4	95.8	87.1
Attendance Rate	93.6	92.9	94.4	92.2	93.3
Number of Students with More Than 10 Unexcused Days Absent	8	29	16	84	0
Number of Students absent greater than 10% of School Year	91	110	73	93	0
Number of Students Retained in the 9th Grade	0	0	1	0	0
Number of Students Who Have Dropped Out	2	1	13	2	5,586
Number of Students Suspended	99	34	26	16	43,020
Number of Students Expelled	10	2	1	4	891
Number of Students Expelled or Suspended involving Drugs, Weapons, or Alcohol	12	1	1	6	2,943
Number of Out of School Suspensions	88	34	26	13	27,981
Number of In School Suspensions	27	0	0	4	20,769

**Walnut Elementary School, New Market 6258**

Indicator	School Results				State
	'17-'18	'18-'19	'19-'20	'20-'21	Totals
A-F Accountability Grade	A	A	A	N/A	
Student Enrollment	191	173	190	181	1,112,611
Number of Certified Teachers	10	10	11	10	60,992
Percentage of Students Passing IREAD	92.0	96.2	N/A	82.6	80.4
* Grade 3 Percent Passing ISTEP+/ ILEARN Math Standard	64.0	66.7	N/A	41.7	48.7
* Grade 3 Percent Passing ISTEP+/ ILEARN Language Arts Standard	80.0	45.8	N/A	37.5	38.7
* Grade 4 Percent Passing ISTEP+/ ILEARN Math Standard	91.7	69.6	N/A	54.5	43.7
* Grade 4 Percent Passing ISTEP+/ ILEARN Language Arts Standard	83.3	43.5	N/A	31.8	39.6
* Grade 4 Percent Passing ISTEP+/ ILEARN Science Standard	91.7	56.5	N/A	27.3	36.1
* Grade 5 Percent Passing ISTEP+/ ILEARN Math Standard	92.6	78.6	N/A	82.4	38.6
* Grade 5 Percent Passing ISTEP+/ ILEARN Language Arts Standard	92.6	64.3	N/A	83.3	39.5
* Grade 5 Percent Passing ISTEP+/ ILEARN Social Science Standard	81.5	78.6	N/A	66.7	38.6
* Grade 6 Percent Passing ISTEP+/ ILEARN Math Standard	63.6	0	N/A		
* Grade 6 Percent Passing ISTEP+/ ILEARN Language Arts Standard	77.3	0	N/A		
* Grade 6 Percent Passing ISTEP+/ ILEARN Science Standard	59.1	0	N/A		
Pupil Enrollment to Certified Employee Ratio	12.1	9.5	10.1	9.9	12.7
Attendance Rate	95.8	96.4	96.9	95.5	93.3
Number of Students with More Than 10 Unexcused Days Absent	0	4	5	6	0
Number of Students absent greater than 10% of School Year	6	8	11	11	0

\* In 2014-15 Indiana transitioned to new, more rigorous college-and-career ready standards and a new statewide assessment to measure these standards. Therefore, results are not comparable to previous data.

**New Market Elementary School, New Market 6269**

Indicator	School Results				State
	'17-'18	'18-'19	'19-'20	'20-'21	Totals
A-F Accountability Grade	A	A	A	N/A	
Student Enrollment	507	449	438	437	1,112,611
Number of Certified Teachers	26	22	23	23	60,992
Percentage of Students Passing IREAD	96.5	94.9	N/A	92.5	80.4
* Grade 3 Percent Passing ISTEP+/ ILEARN Math Standard	79.3	68.8	N/A	66.2	48.7
* Grade 3 Percent Passing ISTEP+/ ILEARN Language Arts Standard	84.5	40.3	N/A	47.7	38.7
* Grade 4 Percent Passing ISTEP+/ ILEARN Math Standard	79.2	76.6	N/A	71.1	43.7
* Grade 4 Percent Passing ISTEP+/ ILEARN Language Arts Standard	77.4	65.6	N/A	48.7	39.6
* Grade 4 Percent Passing ISTEP+/ ILEARN Science Standard	60.4	57.8	N/A	47.4	36.1
* Grade 5 Percent Passing ISTEP+/ ILEARN Math Standard	81.4	64.2	N/A	62.0	38.6
* Grade 5 Percent Passing ISTEP+/ ILEARN Language Arts Standard	82.6	54.7	N/A	49.4	39.5
* Grade 5 Percent Passing ISTEP+/ ILEARN Social Science Standard	68.6	43.4	N/A	41.8	38.6
* Grade 6 Percent Passing ISTEP+/ ILEARN Math Standard	65.1	0	N/A		
* Grade 6 Percent Passing ISTEP+/ ILEARN Language Arts Standard	73.5	0	N/A		
* Grade 6 Percent Passing ISTEP+/ ILEARN Science Standard	65.1	0	N/A		
Pupil Enrollment to Certified Employee Ratio	14.7	14.2	14.4	14.1	12.7
Attendance Rate	95.9	96.3	97.0	96.9	93.3
Number of Students with More Than 10 Unexcused Days Absent	10	5	0	16	0
Number of Students absent greater than 10% of School Year	25	18	9	18	0
Number of Students Suspended	8	4	24	13	43,020
Number of Out of School Suspensions	8	2	7	7	27,981
Number of In School Suspensions	0	2	22	8	20,769

Never miss a public notice on legal proceedings!  
 After it prints



# Thousands Of Indiana High Schoolers Earn College Credit Before Graduation

More than 7,500 Hoosier high school students over the past five years have earned the Indiana College Core or an associate degree while still in high school, continuing Indiana's strong support of students taking early college credit with the benefit of students saving time and money toward postsecondary education and training.

Recent data show more than 1,800 students earned the Indiana College Core, and almost 500 students earned an associate degree in 2020 – all while still in high school. Created in 2012, the Indiana College Core is a 30 credit-hour block of general education college-level coursework that transfers to all Indiana public colleges and universities and some private institutions. Indiana students can earn up to a full year of college for \$750 or less when they earn the Indiana College Core while in high school.

To continue building awareness around the benefits of the Indiana College Core with high school students, the Indiana Commission for Higher Education and Indiana Department of Education released today a comprehensive digital guide and toolkit. The

materials are designed to equip educators, especially school counselors, with the information and tools needed to help students make knowledgeable decisions about earning the Indiana College Core.

"The popularity of the Indiana College Core has grown since its creation with thousands of students earning it each school year," said Indiana Commission for Higher Education Teresa Lubbers. "Our new educator guide and toolkit will increase awareness of the Core and the benefits of earning it. Working in partnership with the Indiana Department of Education, we are making these materials available to high school educators and counselors around the state so more students can take advantage of this opportunity."

Nearly 94 percent of Indiana College Core earners from the class of 2018 went on to attend college. Once at college, those students can focus on major-specific courses earlier than their peers and pursue additional opportunities such as adding a minor and studying abroad. Additionally, they're more likely to graduate on time or early and could pursue graduate school ahead of their peers who didn't

earn the Core while in high school.

Indiana College Core LogoWhile more students are earning the Indiana College Core, gaps remain. Far too few Indiana high schools offer the Core – the Commission estimates that it's currently available at just one in five high schools. The educator guide serves as an informational resource for school administrators to learn how their school can become a provider. It also instructs counselors on how to assist students with earning and transferring the Core.

"It's important that every student has access to pathways throughout their K-12 education that prepare them for what's next after high school – whether that's employment, enrollment or enlistment leading to service," said Indiana Secretary of Education Dr. Katie Jenner. "Completing the Indiana College Core while still in high school can help our students open doors by earning a degree or credential, saving them time and money. Expanding access to the Indiana College Core at all Indiana schools – rural, urban and suburban – can be a game-changer for our students while also

strategically setting the foundation for increasing educational attainment in communities across our state."

The toolkit features plug-and-play resources such as an email template, social media posts, a short informational video and

website content to be used to explain the Indiana College Core to students and parents. Counselors also have access to a fillable course offering list, making it clear to students and parents which courses qualify for the Core.

The guide and toolkit

are located on Learn-MoreIndiana.com, along with a variety of other resources designed specifically for K-12 counselors and educators.

For more information about dual credit and credit transfer, visit TransferIN.net.

## LWV From Page A1

Consolidated, Monroe County, Munster, Paramount Cottage Home, Delhi Community Schools, and Carmel Clay Schools have started by replacing one or two retiring buses with electric buses each year. The passage of the 2022 Infrastructure Investment Act freed up \$500 million dollars a year for the next five years to help pay for electric buses. These federal funds will be distributed via grants and rebates. Additionally, the Volkswagen Environmental Mitigation funds have helped other districts with the initial sticker shock- an electric bus costs about four hundred thousand dollars, compared to a diesel counterpart, which rings up at about one hundred thousand.

Beyond the initial cost are fuel and maintenance costs, the big selling point of electric vehicles. Their engines are seventy-five percent efficient, compared to twenty-five percent efficiency for fuel-burning engines. Presently, North Montgomery's Clayton Randolph said that each bus costs five thousand dollars a year to maintain and fuel, or just under a quarter of a million dollars annually closer to one hundred seventy thousand a year. Powering an electric bus saves districts two-thirds of the cost of fuel. They are cheaper to maintain as well because they have regenerative braking and more efficient drivetrain systems.

Presently, the average life of a bus is five to ten years, depending on how

districts manage their fleet. CCSC has over twenty buses in its fleet. North Montgomery (NMSC) has forty-nine. (Note: Southmont did not reply to an invitation to be interviewed.) Annually North Montgomery replaces four to five buses a year. CCSC replaces one or two. Because its fleet is smaller. To begin replacing older buses with electric technology, corporations need to locate grant funds, which Drive Clean Indiana helps districts do.

As the US transitions to electric vehicles, one initial barrier is the cost of the charging infrastructure. Corporations would want to plan for charging that handles up to four buses. The initial cost is eighty thousand dollars to charge four buses over three to six hours. This might work well for CCSC but not as much for North Montgomery. The city derives a large portion of its power from solar, and the school district would become one of its best customers. John

Smilie cited a Massachusetts district that worked out a financial deal with the electricity provider to use the batteries on parked buses to balance the power grid. The company could store excess power on the bus batteries, which is very helpful during the summer months when the solar demands shift and most buses are parked.

North Montgomery would need to restructure how it manages its fleet. Presently drivers take their buses home, presenting a problem with charging.

Randolph also noted that a number of their buses transport students to extra-curriculars, so charging time would become a juggling act. While they keep their options open they need to hear from constituents to know that the first priority is students' health and cognitive ability.

In part, parents, teachers, and community members should let their districts know why the transition should begin as soon as possible. John Smilie noted that "There are some things that more you learn about them, it's hard to say if its good or bad. Air pollution is not one of those things. Every year there is more information about what it does to the human body. Particulate matter 2.5 (that the size of the particles) gets into the body and increases heart disease, cancer, asthma, vision loss, dementia, and cognitive performance. Increasingly there is evidence it contributes to depression. In the short and long term, being exposed to air pollution reduces our ability to think."

That's the opposite of what we send our kids to school to do, and we don't want to be counterproductive while training up kids for the future.

The League of Women Voters is a nonpartisan, multi-issue political organization which encourages informed and active participation in government. For information about the League, visit the website [www.lwvmontcoin.org](http://www.lwvmontcoin.org); or, visit the League of Women Voters of Montgomery County, Indiana Facebook page.

## TIM From Page A1

to drive. Puts everything in a whole different perspective.

\*\*\*  
**ONE OF** the fun parts of this has been the grandpuns. As some of you know, we have seven (soon to be eight), six of them boys and all under the age of 11. Just below my "zipper" scar on my chest are three horizontal holes from where the drainage tubes were. I may have hinted to the little ones that Grandpa got shot by a machine gun and for a quarter they could see the holes. My wife and daughters just shake their heads.

\*\*\*  
**GOOD GOSH**, is there anything of quality on TV anymore? If so, I haven't found it and I've been looking. A lot!

\*\*\*  
**CHECK THAT**. The Chosen is a series that is pretty outstanding. Come and see.

\*\*\*  
**WHILE WHAT** is happening in Ukraine is awful, it's been nice to see young people around the U.S. showing their support for President Volodymyr Zelenskyy. We haven't seen a big show of patriotism out

of them before, so perhaps this is a step in the right direction. It's also good that they are seeing the Soviet Bear in the same light many of us long have.

Peace is a precious commodity and keeping it, as is so dramatically evident, requires strength and vigilance. Let's hope that our society keeps that in mind.

*Two cents, which is about how much Timmons said his columns are worth, appears periodically on Wednesdays in The Paper. Timmons is the publisher of The Paper and can be contacted at [timmons@thepaper24-7.com](mailto:timmons@thepaper24-7.com)*

# BELTONE'S SPRING HEARING EVENT

## Don't Wait Until It's Too Late



### Scientifically Proven

Scientific studies have proven that if hearing loss goes untreated, a condition called "auditory deprivation" occurs, affecting your ability to understand speech.

### Use it or lose it!

The longer your hearing loss goes untreated, the more likely it is your brain will actually "forget" how to hear.

### Imagine the Possibilities

But there's good news! High-quality hearing instruments — like the **Belton Imagine™** — can ensure the auditory centers of your brain "stay busy", minimizing the effects of auditory deprivation.



48 Million People experience hearing loss, and I am one of them.

**FREE**  
Hearing Screening & Consultation  
Expires 3/31/22

**SPECIAL**  
Hearing Aids starting at just **\$999**  
Offer valid on one (1) Rely 2 battery-operated hearing aid technology. Not valid on previous purchases. While supplies last.  
Expires 3/31/22

### All New Belton Rely 2!

 100% Digital ITC (In-the-canal) <b>WAS \$1999</b> <b>YOU PAY \$999*</b>	 100% Digital Open-Fit BTE (Behind-the-ear) <b>WAS \$1999</b> <b>YOU PAY \$999*</b>	 100% Digital Half Shell (Half Shell-in-the-ear) <b>WAS \$1999</b> <b>YOU PAY \$999*</b>	 100% Digital Full Shell (Full Shell-in-the-ear) <b>WAS \$1999</b> <b>YOU PAY \$999*</b>
---	--	---	---

\*Offer valid on one (1) Rely 2 digital hearing aid technology. Fits up to 35 dB loss.

<b>BROWNSBURG</b> 1451 S. Green St. (St.Rd. 267 SOUTH of Brownsburg Medical Ctr.) <b>(317) 939-5262</b>	<b>CRAWFORDSVILLE</b> 1880 US 231 S. Suite F. (Across from Walmart) <b>(765) 746-7354</b>	<b>LAFAYETTE</b> 3320 E South St. (Corner of 26 & 52 behind Steak 'n Shake) <b>(765) 588-3506</b>	<b>LEBANON</b> 2214 N. Lebanon St. (Northfield Center) <b>(765) 746-7130</b>
--	--	--	---

 Now serving Indiana, Illinois & Ohio! Call 800-371-HEAR or visit <a href="http://beltoneindiana.com">beltoneindiana.com</a>	 <b>Price Match Guarantee:</b> We will meet or beat any competitor price or coupon on comparable item or product	 Most insurance plans accepted
--	--	-----------------------------------

**All Belton Indiana offices are locally operated by your friends and neighbors**

Valid at participating locations only. See locations for details. \*Offer valid on one (1) Rely 2 battery operated digital hearing aid technology. Fits up to a 35 dB loss. Previous purchases excluded. Cannot be combined with any other promotions or discounts. Benefits of hearing instruments may vary by type and degree of hearing loss, noise environment, accuracy of hearing evaluation and proper fit. © 2022 All rights reserved. Belton is a trademark of GN Hearing Care Corporation.

**FINANCING AVAILABLE!**